

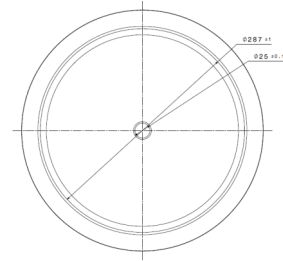
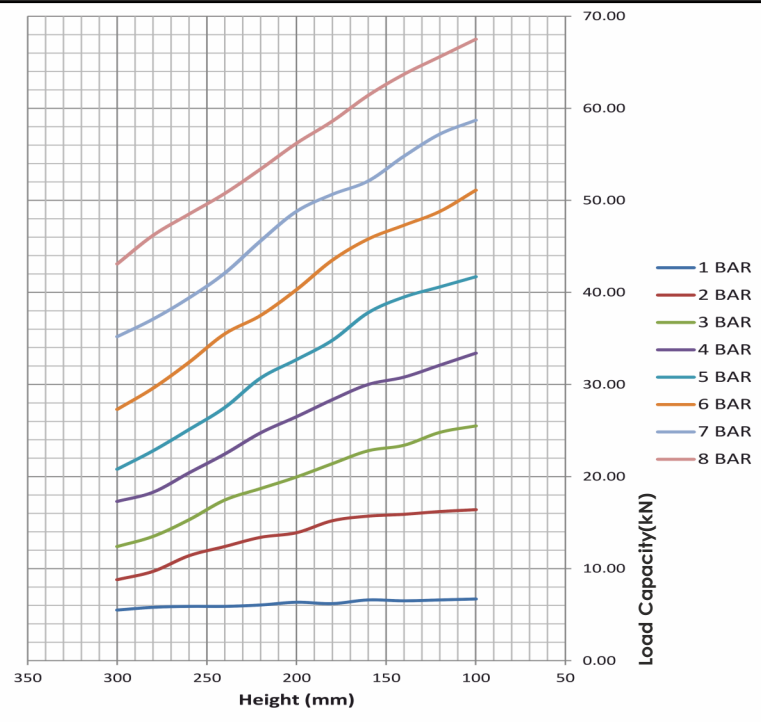
Technical Data

Part Description: Crimped convolute type complete assembly
Free Height: 340mm
Minimum Recommended Height: 80mm
Design Height: 240mm
Maximum Recommended Height: 300mm
Working Stroke: 220mm
Loading Capacity @ 1 BAR @ 240mm (±5%): 5.9kN
Loading Capacity @ 7 BAR @ 240mm (±5%): 42.1kN
Maximum OD @ 7 BAR: Ø395mm
Required Space: 425mm
Weight (±0.2kg): 8.3kg

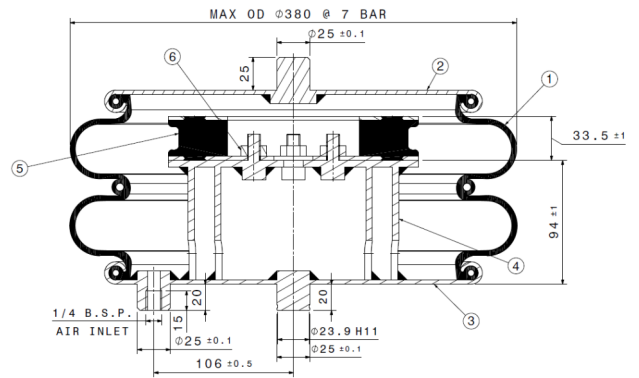
Force (kN)

Air Pressure Height (mm)	1 bar	2 bar	3 bar	4 bar	5 bar	6 bar	7 bar	8 bar
300	5.50	8.80	12.40	17.30	20.80	27.30	35.20	43.10
280	5.80	9.70	13.50	18.30	22.80	29.60	37.10	46.20
260	5.90	11.40	15.30	20.40	25.10	32.40	39.40	48.50
240	5.90	12.40	17.45	22.45	27.50	35.50	42.10	50.75
220	6.05	13.40	18.70	24.75	30.70	37.50	45.60	53.40
200	6.35	13.90	19.95	26.50	32.70	40.30	48.80	56.20
180	6.20	15.20	21.40	28.35	34.80	43.50	50.65	58.60
160	6.60	15.70	22.80	30.00	37.80	45.80	52.10	61.40
140	6.50	15.90	23.40	30.80	39.50	47.30	54.80	63.70
120	6.60	16.20	24.80	32.10	40.60	48.80	57.20	65.60
100	6.70	16.40	25.50	33.40	41.70	51.10	58.70	67.50

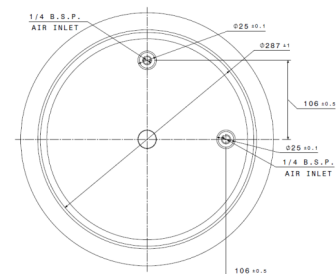
Static Characteristics



Top View



Section View



Bottom View

CROSS REFERENCE

Gibraltar	Firestone	Contitech	Oria
2G-12	21	FD 530-22	M-100