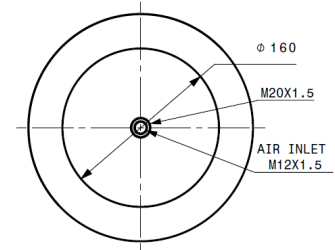


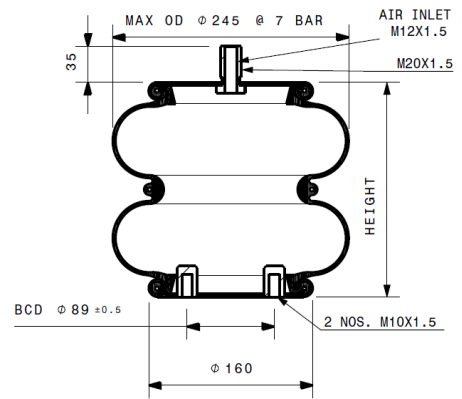
# G2B12Ra

## Technical Data

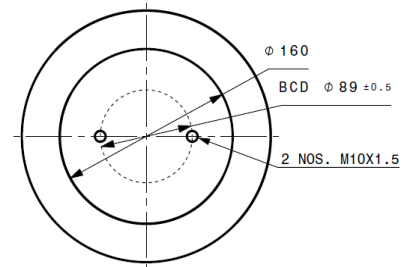
|   |
|---|
| Part Description: Crimped convoluted type complete assembly |
| Free Height: 295mm  |
| Minimum Recommended Height: 88mm                            |
| Design Height: 200mm  |
| Maximum Recommended Height: 260mm                           |
| Working Stroke: 172mm                                       |
| Loading Capacity @ 1 BAR @ 200mm (±5%): 1.5kN               |
| Loading Capacity @ 7 BAR @ 200mm (±5%): 16.9kN              |
| Maximum OD @ 7 BAR : Ø245 mm                                |
| Required Space: 275mm                                       |
| Weight ( ±0.2kg ) : 3.5kg                                   |



Top View



Section View

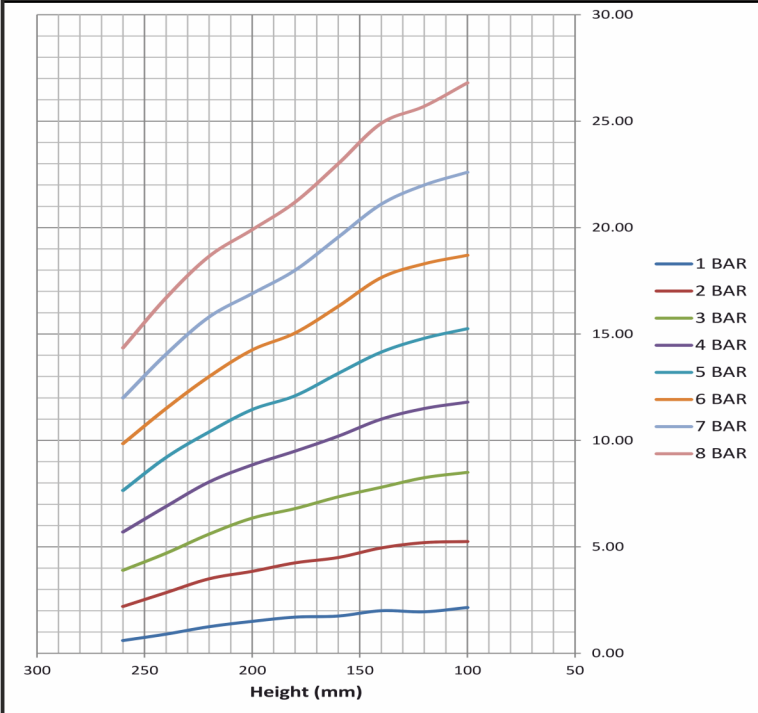


Bottom View

## Force (kN)

| Air Pressure<br>Height (mm) | 1 bar | 2 bar | 3 bar | 4 bar | 5 bar | 6 bar | 7 bar | 8 bar |
|-----------------------------|-------|-------|-------|-------|-------|-------|-------|-------|
| 260                         | 0.60  | 2.20  | 3.90  | 5.70  | 7.65  | 9.85  | 12.00 | 14.35 |
| 240                         | 0.90  | 2.85  | 4.70  | 6.90  | 9.20  | 11.50 | 14.05 | 16.70 |
| 220                         | 1.25  | 3.50  | 5.60  | 8.05  | 10.40 | 13.00 | 15.80 | 18.65 |
| 200                         | 1.50  | 3.85  | 6.35  | 8.85  | 11.45 | 14.25 | 16.90 | 19.90 |
| 180                         | 1.70  | 4.25  | 6.80  | 9.50  | 12.10 | 15.05 | 18.00 | 21.20 |
| 160                         | 1.75  | 4.50  | 7.35  | 10.20 | 13.15 | 16.30 | 19.55 | 23.00 |
| 140                         | 2.00  | 4.95  | 7.80  | 11.00 | 14.15 | 17.65 | 21.10 | 24.90 |
| 120                         | 1.95  | 5.20  | 8.25  | 11.50 | 14.80 | 18.30 | 22.00 | 25.70 |
| 100                         | 2.15  | 5.25  | 8.50  | 11.80 | 15.25 | 18.70 | 22.60 | 26.80 |

## Graph



## CROSS REFERENCE

| Gibraltar | Firestone | Contitech    | Vibracoustic | Goodyear |
|-----------|-----------|--------------|--------------|----------|
| G2B12Ra   | 20        | FD 200-19 CI | V2B12R       | NA       |