

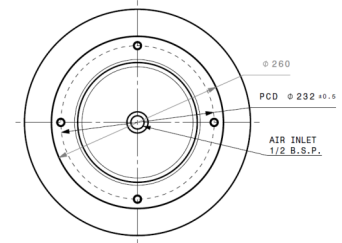
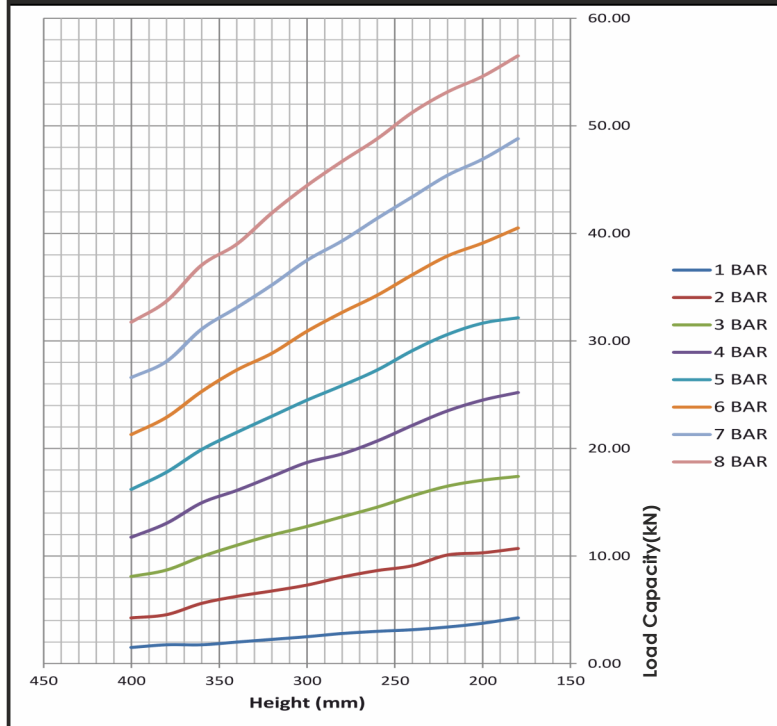
Technical Data

Part Description: D-Series convolute type complete assembly
Free Height: 430mm
Minimum Recommended Height: 145mm
Design Height: 280mm
Maximum Recommended Height: 400mm
Working Stroke: 255mm
Loading Capacity @ 1 BAR @ 280mm (±5%): 2.8kN
Loading Capacity @ 7 BAR @ 280mm (±5%): 39.3kN
Maximum OD @ 7 BAR : Ø345mm
Required Space: 375mm
Weight (±0.2kg) : 7.5kg

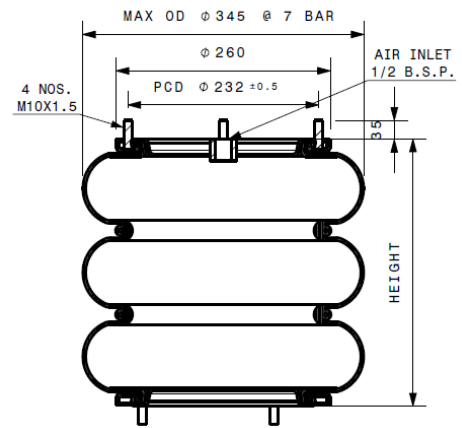
Force (kN)

Air Pressure Height (mm)	1 bar	2 bar	3 bar	4 bar	5 bar	6 bar	7 bar	8 bar
400	1.50	4.25	8.10	11.75	16.20	21.30	26.60	31.75
380	1.75	4.55	8.70	13.05	17.80	22.90	28.10	33.70
360	1.75	5.60	9.95	14.95	19.90	25.30	31.10	37.05
340	2.00	6.25	11.00	16.10	21.50	27.30	33.10	39.00
320	2.25	6.75	11.95	17.40	23.00	28.85	35.20	41.90
300	2.50	7.30	12.75	18.70	24.50	30.90	37.50	44.45
280	2.80	8.05	13.65	19.50	25.85	32.65	39.30	46.70
260	3.00	8.65	14.55	20.70	27.30	34.25	41.40	48.80
240	3.15	9.10	15.60	22.15	29.10	36.15	43.40	51.25
220	3.40	10.10	16.50	23.50	30.60	37.90	45.40	53.15
200	3.75	10.30	17.05	24.50	31.65	39.10	46.90	54.60
180	4.25	10.70	17.40	25.20	32.15	40.50	48.80	56.50

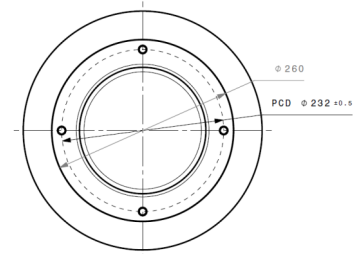
Static Characteristics



Top View



Section View



Bottom View

CROSS REFERENCE

Gibraltar	Firestone	Contitech	Oria
G12X3	12X3	FS 412-32 DS	D12X3